



Resettable Tach/Hour Meter

RL-HM026A





Resettable Tach/Hour Meter

① + ② + ③

① Timing system

TOT
JOB
SVC
etc



② RPM system

RPM
MAX RPM
MAX RPM RECORD
etc



③ Unique design

Large LCD
Completely Waterproof
etc

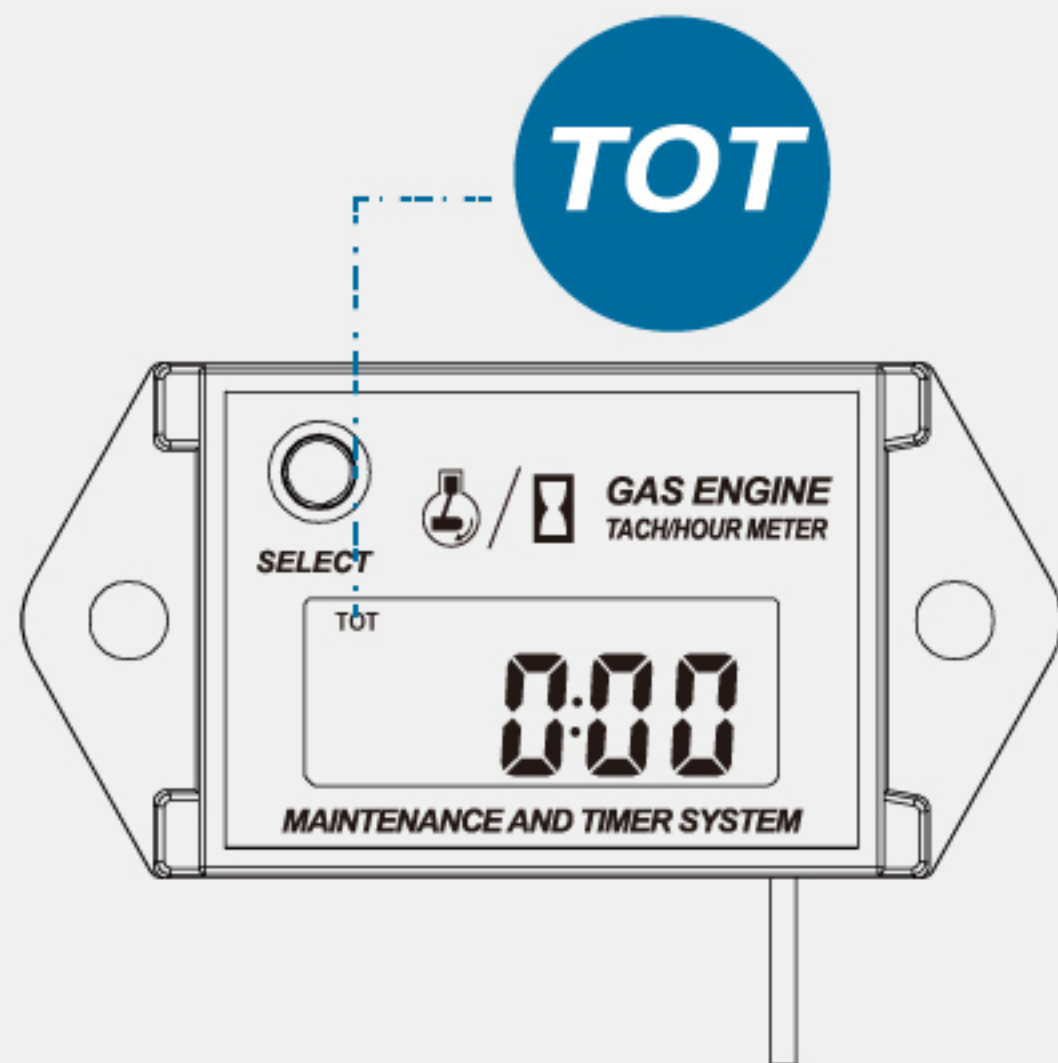


Timing system

TOT: *Accumulating total hours*

Accumulating total hours of engine. Range :0-99999H,
hour resolution is 1Min.

Non-resettable. Operational errors can be avoided.

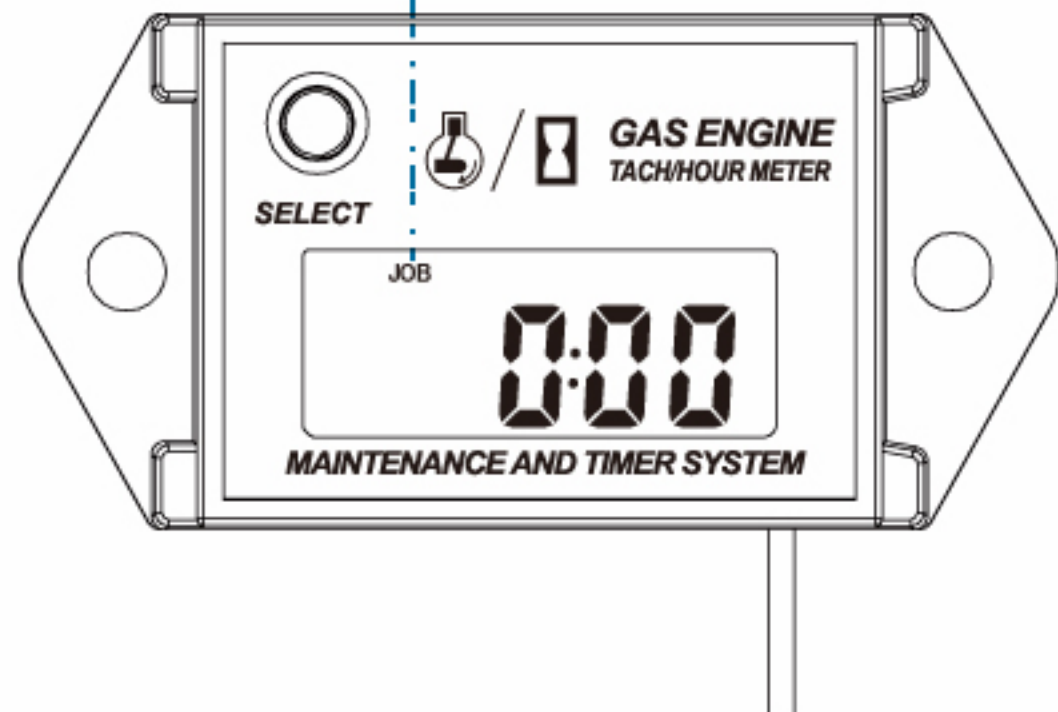


0-99999H

<1 Min>



JOB



Timing system

JOB:Recording partial time

Recording partial time of engine.

Viewable and resettable.

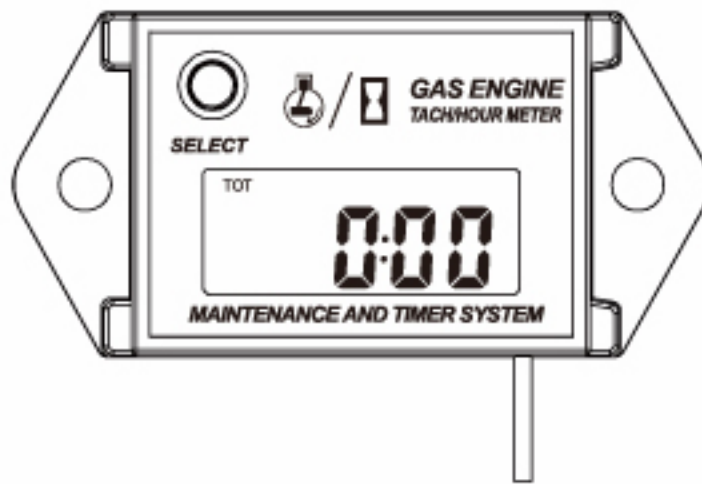
0-99999H

JOB
Resettable



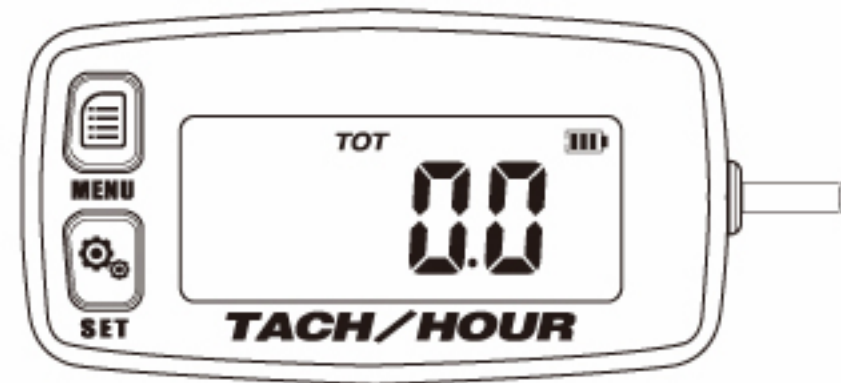
Timing Accuracy

RL-HM026A



Accuracy: 1 Min

RL-HM032R

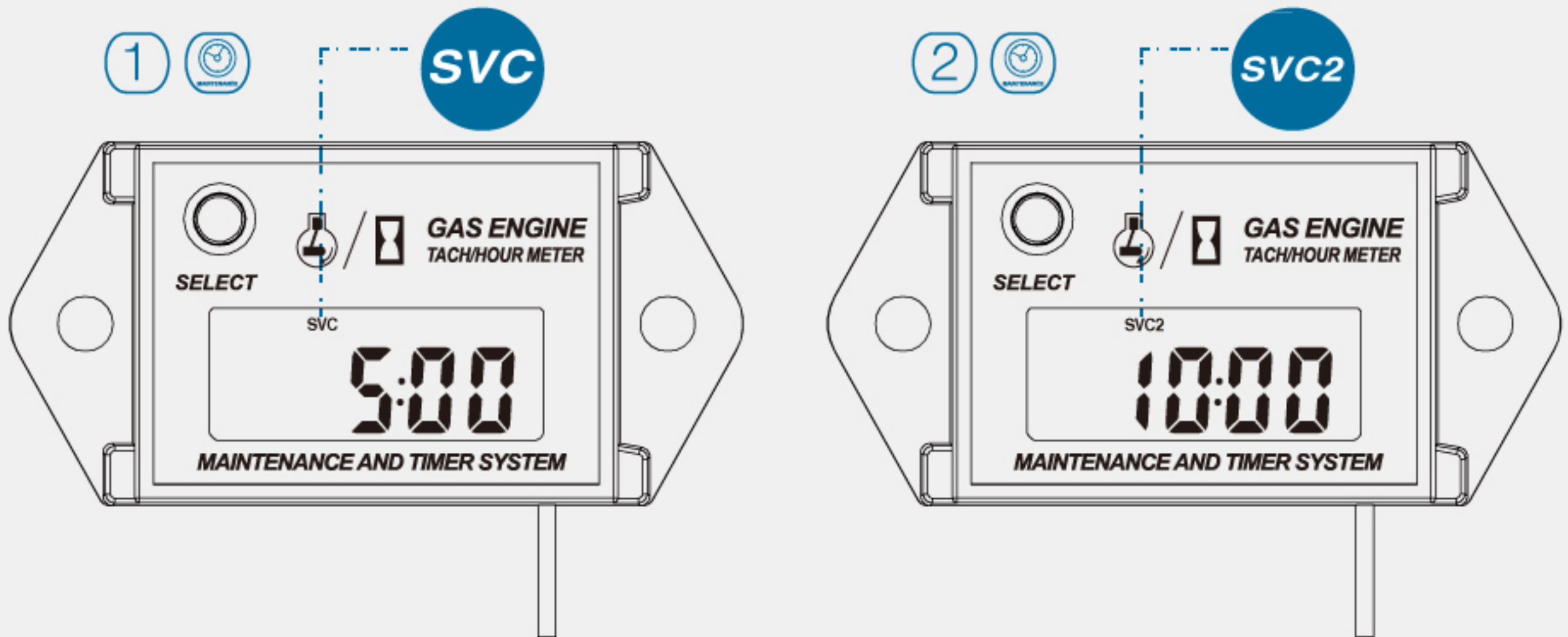


Accuracy: 0.1 H = 6 Min

Timing Accuracy of other products: 0.1 H = 6 Min

Timing Accuracy of RL-HM026A : 1 Min

Timing system - Maintenance Timer



Maintenance Time can be set.
Maintain engine in time.

Maintenance reminders can be set in accordance with engine demands.

Maintenance time can be set to 2 group : 5-50(+1)H/10-250(+5)H,

The default maintenance time:5H,10H

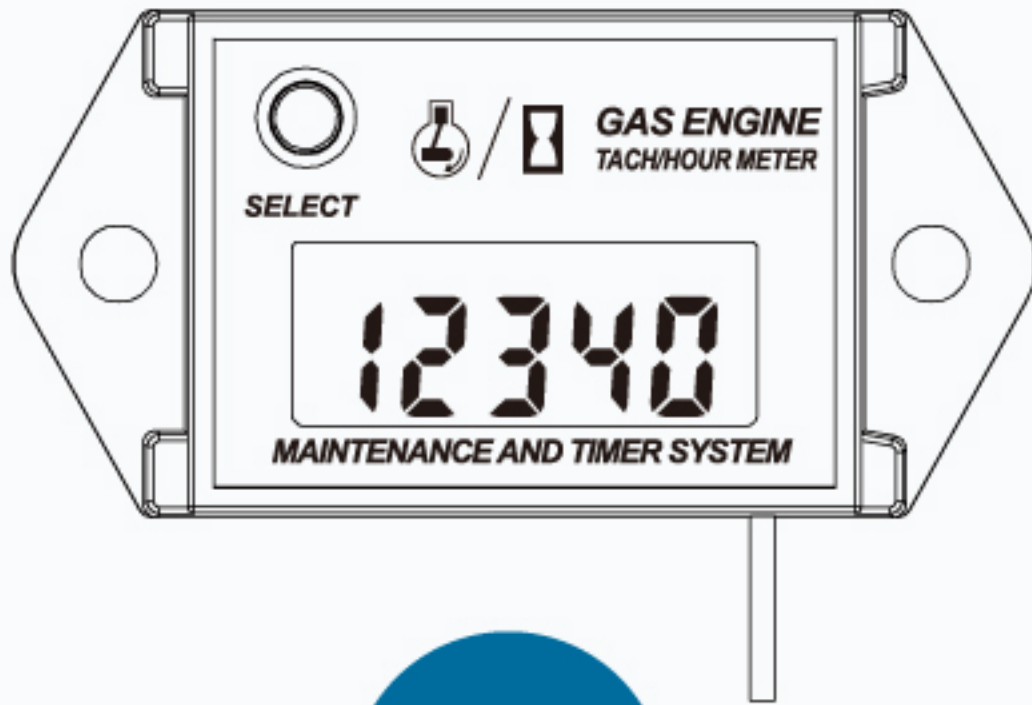
Method: countdown,

When the time is reduced to 0.0, "SVC/SVC2"flashes to remind maintain the engine.

Set 5-50H	Default 5 H	Flash SVC
<hr/>		
SVC1		

Set 10-250H	Default 10 H	Flash SVC2
<hr/>		
SVC2		

RPM Real - time display



RPM



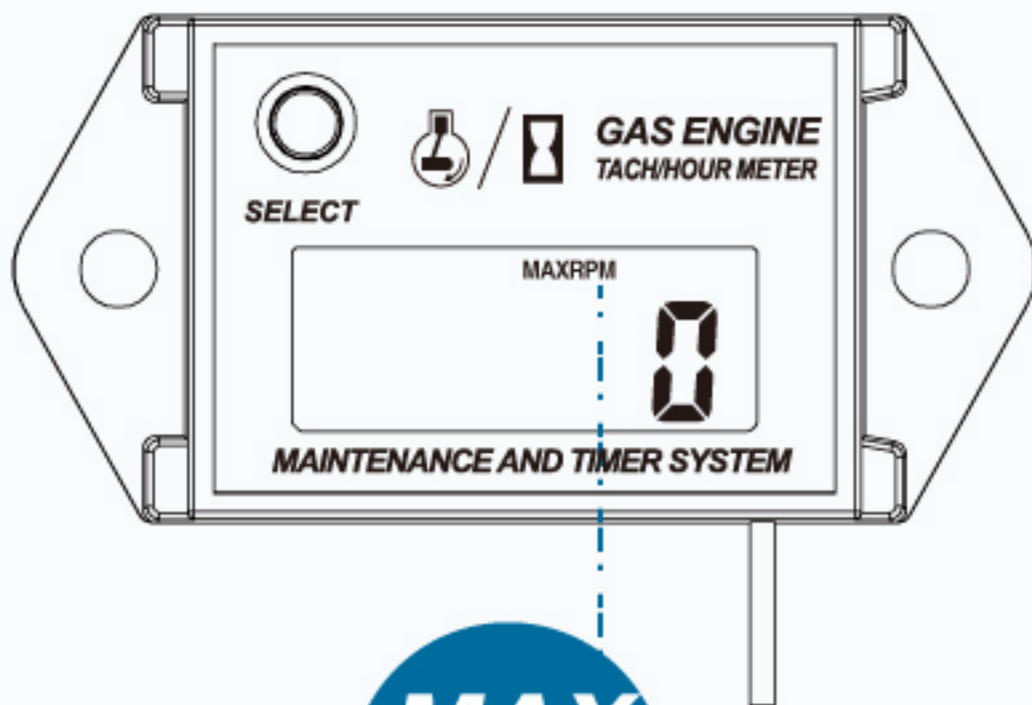
RPM Real-time display

When engine starts work, LCD real-time display the current speed. Easy to view.

RPM range: 0-30000RPM
RPM accuracy: 10RPM

0-30000_{RPM}

10_{RPM}



**MAX
RPM**



MAX RPM Viewable+Resetable

Record engine's MAX RPM within once working period. Help to view MAX RPM.

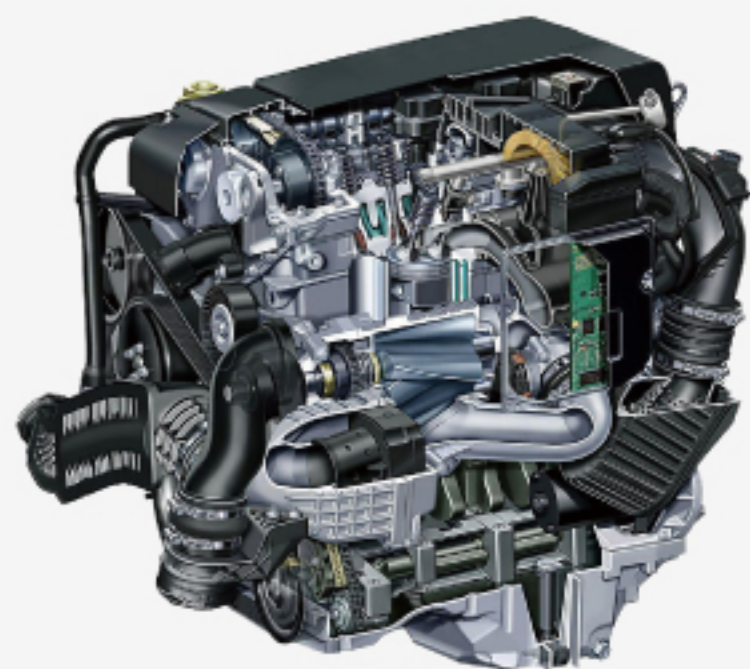
After engine stopped, MAX RPM can be view at any time and can also be automatically replaced when engine resently started.



Refresh Rate

Refresh rate **0.5s**

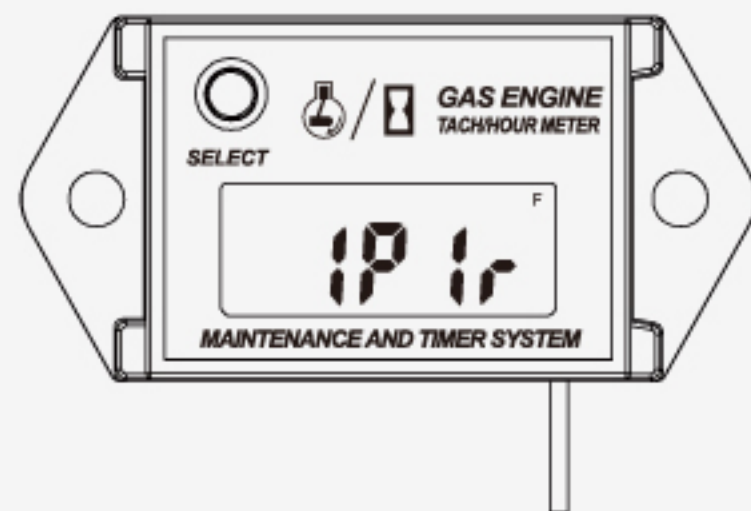
0.5s refresh rate setting makes data quickly and accurately.



7 Engine Type Setting

Products can be used for most gasoline engines

Adjustable features:
seven kinds of stroke
The default mode; 1P1R

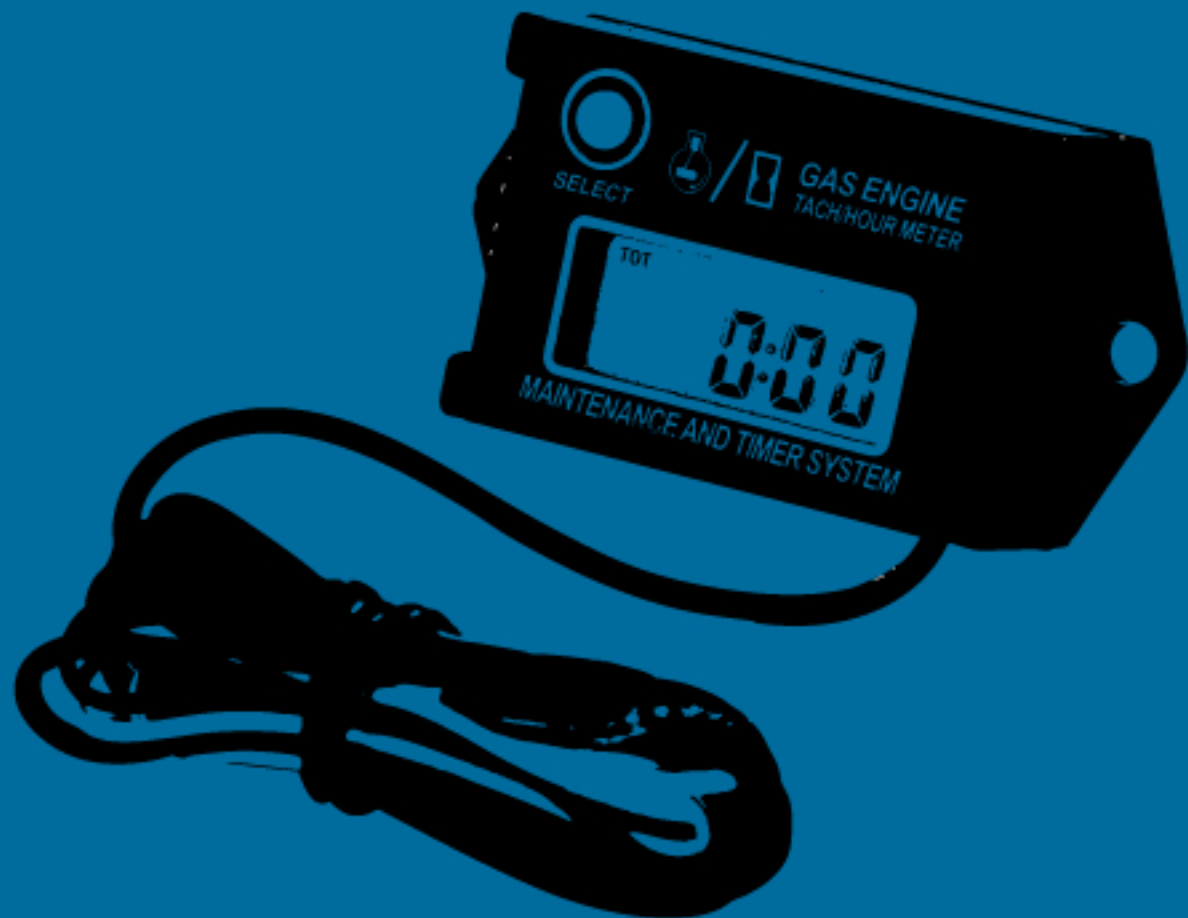


Product use for

4-STROKE 2-CYLINDER	4-STROKE 4-CYLINDER	2-STROKE 1-CYLINDER	2-STROKE 3-CYLINDER	4-STROKE 12-CYLINDER
4-STROKE 1-CYLINDER	4-STROKE 6-CYLINDER	2-STROKE 2-CYLINDER	4-STROKE 8-CYLINDER	4-STROKE 16-CYLINDER



UNI **Design**
QUE



Features-Large LCD

5 digit large display, easy to read



LCD size 1.38"x0.5"(35mmx12.5mm)RL-HM026A's LCD is 1.8 times as big as RL-HM006, 1.4 times as big asRL-HM018.Data reading is easier.

Unique Design Dustproof waterproof

Dustproof waterproof level : IP68

Surface-water isolation design

Buttons' bottom-irrigation methods
sealing glue design





Low Power Consumption

Minimum Current : **6uA**

Low-power consumption design
Battery more durable
5 years lifetime.



Meticulous PCB design

More reliable, stable and accurate

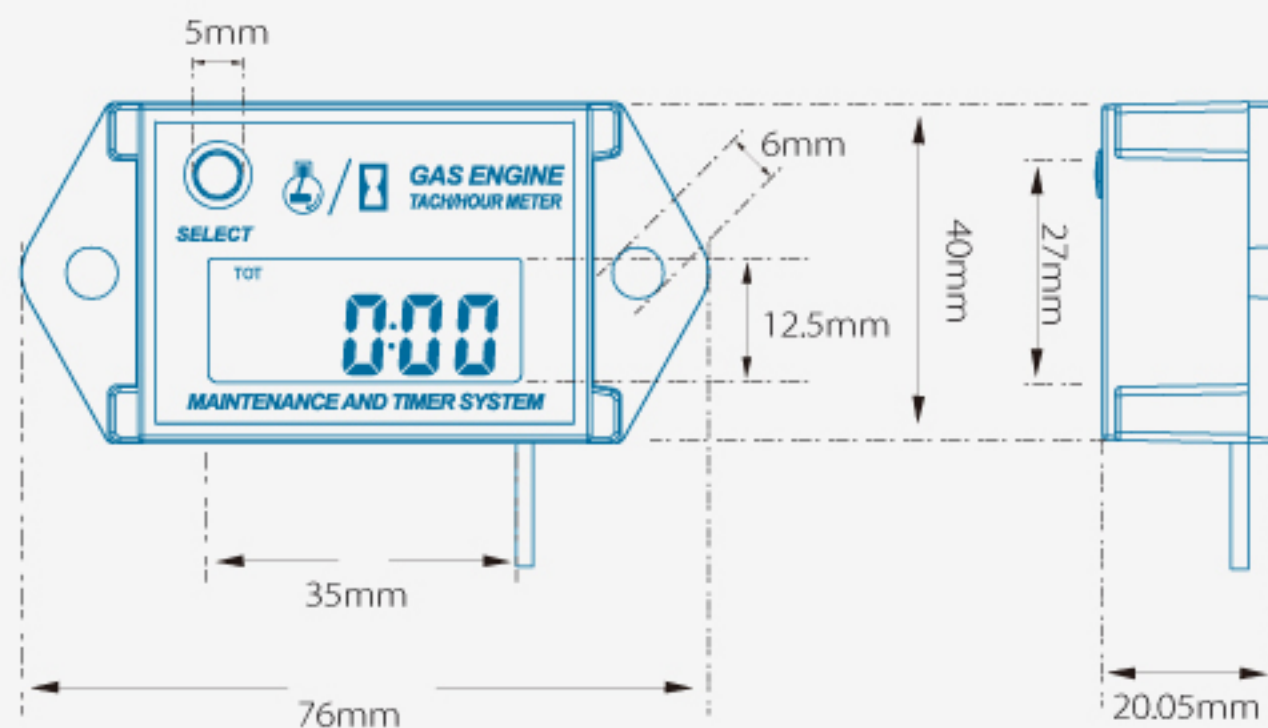
High-quality electronic components.
Fully automated patch.
Optimized circuit design.

Dimensional Drawing

Other Specifications

Digital display height 0.35" (8.5mm)

Slide card packaging,
More safe transportation.



Specifications

Product Name	Resettable Gasoline Tach Hour Meter
Item Number	RL-HM026A
Product Size	76mm x 40mm x 20.5mm
Display Screen	LCD
Screen Size	35mm x 12.5mm
Button Type	Touch Switch
Induction Wire Type	AWM1185 24AWG

Refresh Rate	0.5S
Hours Range	0-99999H
Partial Time Range	0-99999H
RPM Range	0-30000RPM
RPM Accuracy	10RPM
Timing Precision	1min
Maintenance Timer	SVC: 5-50H SVC2:10-250H

Packing Size	180mm*113mm*25mm
N.W.	82g
Waterproof Rate	IP68
Induction Wire Length	1.75M
Battery Specification	CR2430 280mAH
Housing Material	ABS
Display Panel Material	PVC Sticker
Package	Slide Card

Easy to install, complete accessories

Save time and effort,
tool-less design

Parts: 2 zip ties, Cable length: 69" (1750mm)
Fix the product in proper place, Connect the red wire around the spark plug and white wire on the screws of engine, the product will work automatically. To ensure accuracy of data, please wrap around the cable to the spark plug cable around 5 laps.

